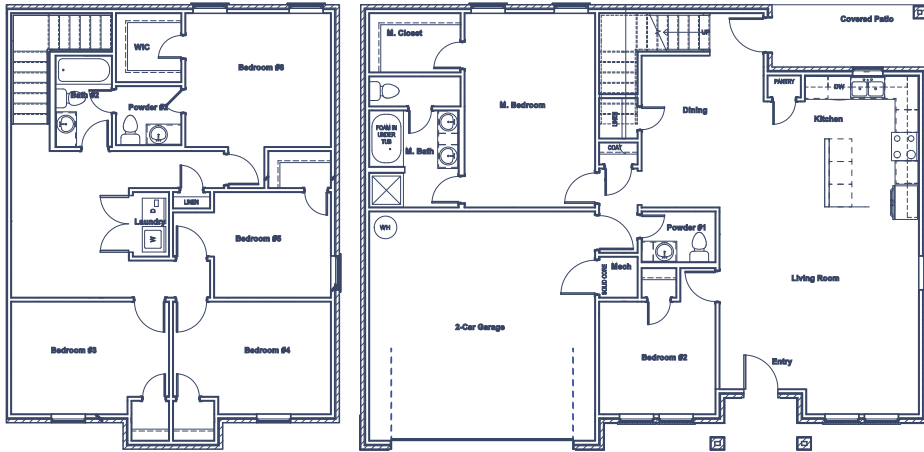


# Indian Plains

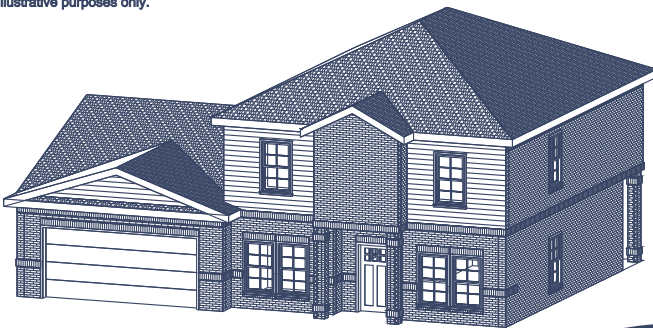
PHASE III

# Colossal

2424 SQFT



\* Elevation and 3D views may vary.  
\* Images are for illustrative purposes only.



## Features

SINGLE FAMILY HOME, TWO STORY



6

BEDROOMS



2

BATHROOMS  
PLUS 2 HALF BATHROOMS



2

CAR GARAGE

THIS BEAUTIFUL HOME FEATURES A FULL BRICK EXTERIOR WITH HARDIE-PLANK EAVES, ASPHALT ARCHITECTURAL ROOF, POST TENSION CONCRETE SLAB AND IS A CERTIFIED OG&E ENERGY POSITIVE HOME

PRICE

**\$329,664**

[info@tivolihomes.net](mailto:info@tivolihomes.net)



Phone: 580.277.1144